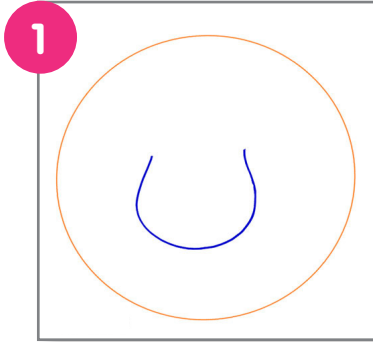
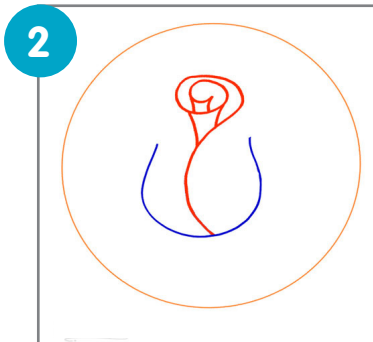


Drawing activity of the week

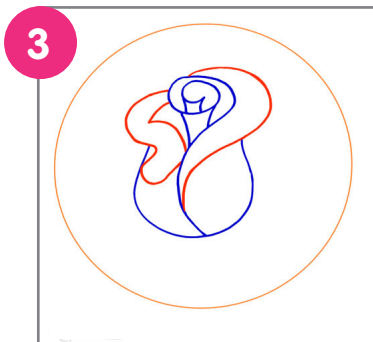
A Rose - step by step



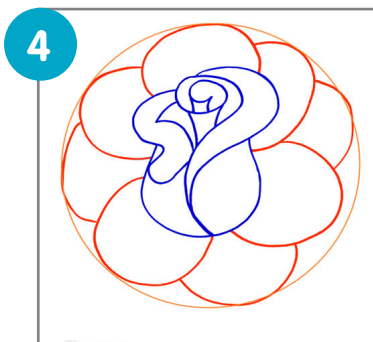
1 Begin your drawing with an accurate circle made using a compass, making it as big as you want your rose to be. Now, draw a "U" shape in the middle of the circle.



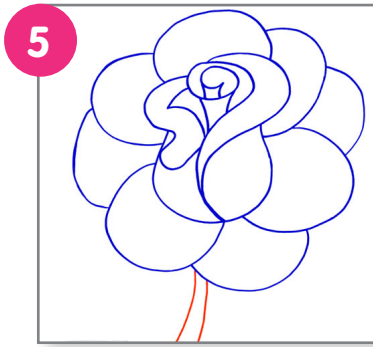
2 See the picture to draw the twisted structure for the core of your rose.



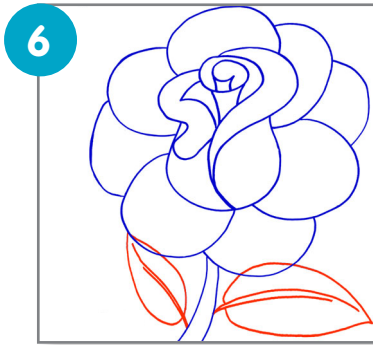
3 Note the new curvy lines made with red in the picture and imitate them in your own drawing.



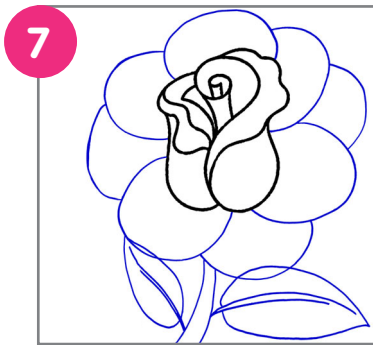
4 Now this is a fun step as all you will be doing is making multiple roundish petals around the base of the rose (the "U" made in step 1).



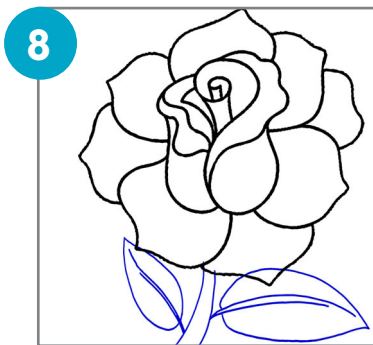
Next, erase the basic circle drawn in step 1, careful not to rub out the rose petals. Now, add two curved lines at the bottom of the rose as shown in the picture (for its stalk).



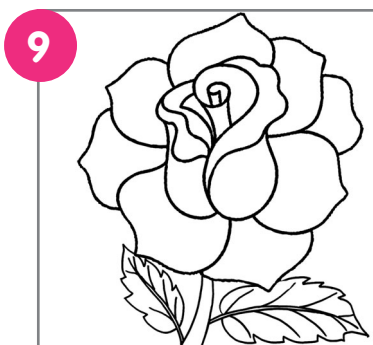
Here, you will be drawing the outlines for two small rose leaves along with their primary veins.



Your outlined picture is done and all that is left to do now is to make it look more realistic. Check the picture to see how the edges of the core petals have been curved a little so they look real.



The same has been done with all the petals in picture 8. Just erase the round edge of each petal and make it slightly pointy..



Now it is time to work on the toothed edges (serrated margins) and the veins of the leaves so they become realistic as well. Just see th picture and work the margins of the leaves as shown, followed by the veins.

Fill your rose and leaves with colors to complete your drawing.